

FOR THOSE WHO MISSED THE 60'S... OR WERE THERE BUT CAN'T REMEMBER.

KW PRODUCTIONS PRESENTS

A SLICE OF SATURDAY NIGHT



By The Heather Brothers



THE 60'S MUSICAL

TUES 23RD SEPT - SAT 27TH SEPT @ 8.00PM
MATINEE ON SAT 27TH @ 3.30PM

An amateur production by arrangement with SAMUEL FRENCH LTD.

UPSTAIRS AT THE WESTERN.

MY LOVE LETTER TO THE 1960S



*"Sexual awakenings and all its taboos,
Horrendous stories you hear in the loos,
It's no wonder there all so confused,
I ask you who'd be seventeen?"*

Excerpt from "Who'd be Seventeen"
from 'A Slice of Saturday Night.'

Hello and welcome to this performance of *A Slice of Saturday Night* and what is also the first production produced by KW Productions. *A Slice of Saturday Night* is a musical with book, lyrics and music by The Heather Brothers: Lea, Neil, Charles and John. The show is a nostalgic pastiche of one Saturday night in the 1960's and tells the story of teenage dreams, reminding us how it felt to be seventeen, young and in love.

I've had a long association with this musical. This is the fourth version I have musically directed and my 'official' debut as a director. It's certainly been challenging on occasion knowing which hat to wear and when.

Thankfully, the company we have assembled have been truly incredible and we have worked collectively to make this production unique to us and not a carbon copy of the original. For me, *A Slice of Saturday Night* is my own love letter to the Sixties – a decade that proved synonymous with the new, radical, and subversive events and trends of the period. They may have been 'swinging' but there was also an innocence that some would say has since been lost. However, even today, this show continues to resonate to any generation. If you have as much fun watching this show as we have had rehearsing it, then my job here is done.

And finally....it is so difficult for any new theatre company to find its feet. My sincere thanks again for coming to support this production and thank you to 'Upstairs at the Western' for giving us a home. See you in the bar.

Leigh (Director/ Musical Director)

Leigh White – Director/ Musical Director.

Trained: The Royal Central School of Speech and Drama, London.

Theatre include: 'Boone' in Lloyd Webber's *Whistle Down The Wind*; 'Simon Simson' in *Our Town*; 'Larry' in *Company*; 'The Man' in *Blues in the Night* and 'Seth' in *The Hired Man in Concert*. **Pantomimes include:** *Jack and the Beanstalk*.

Musical Director for: *Little Shop of Horrors*; *A Slice of Saturday Night*; *Aladdin*; *Cinderella*; *Dick Whittington*; *Robin Hood and the Babes in the Wood*; *The Hired Man*; *Sweeney Todd*; *Into the Woods*; *Company*; *Animal Farm*; *Bugsy Malone* and *Once On This Island*.



KW Productions Proudly Presents

A SLICE OF SATURDAY NIGHT

By The Heather Brothers

An amateur production by arrangement with SAMUEL FRENCH LTD.

CAST

Eric 'Rubber Legs' De Vene - David Lovell

Gary - Wil Neale

Bridget - Katie Draper

Sharon - Laila Curtis

Sue - Laura Carvell

Rick - Keiran Whelan

Eddie - Matthew Bloomfield

Penny - Hollie Muggleton



PRODUCTION TEAM

Director/Musical Director - Leigh White

Dance Choreography - Keiran Whelan*

**Choreography for 'You're Oh, So' - Laila Curtis*

Lighting and Sound Design - Timothy Neville

Costume Design - John Bale

With Special Thanks to Jessica Allsop

THE TIME: THE EARLY 1960'S

The action takes place in and around the 'Club A Go-Go' - a 'cavern' type cellar bar in a provincial English town.

ACT ONE

Musical Numbers

ACT TWO

A Slice Of Saturday Night - Company

Club A Go-Go - Eric & Company

Waiting - The Girls

Saturday Night Chat - Company

Seventeen - Rick & Sharon

Don't Touch Me - Eddie & The Boys

Don't Touch Me (Reprise) - Bridget

Twiggy - Sue

Cliff - Eric & Company

What Do I Do Now? - Sharon & Rick

What Do You Do? - Company

If You Wanna Have Fun - Eric & Company

The Long Walk Back - Rick

Romance/Wham Bham - Company

The Boy Of My Dreams - Bridget & Eddie

It Wouldn't Be Saturday Night Without A Fight - Eric & Company

Please Don't Tell Me - Company

I Fancy You - Rick & Sharon

Sentimental Eyes - Sharon & Rick

Heartbreaker - Sue & The Girls

Eric's Gonna Keep Doing - Eric & The Boys

Oh, So Bad - Eddie & Gary

You're Oh, So - Sue & The Girls

Lies - Eric & The Boys

Baby, I Love You - Company

P.E. - Gary

Who'd Be Seventeen? - Eric

Last Saturday Night - Rick & Sharon

A Slice Of Saturday Night!

Club A Go-Go (Reprise) - Company

THERE WILL BE ONE INTERVAL OF 20 MINUTES

The Slice Girls

The Slice Boys

Hollie Muggleton – Penny (the easy, brassy one)

This year, Hollie enters her second year studying Media Production at The University of Lincoln. She also works as a dispenser at Lloyds Pharmacy. Although Hollie has performed in the chorus and worked backstage on many productions at The Little Theatre and for Soar Valley Music College, 'Penny' marks her first principal role.

Theatre includes: *Sweet Charity*; Lloyd Webber's *Whistle Down The Wind* and *Oklahoma!*



Laura Carvell – Sue (the busty cryer)

Laura works as a Planning Analyst in Lutterworth and comes from a family of performers. She caught the "acting bug" at a young age whilst performing with the 'Doris Gwilt School of Dance'. Laura has also played basketball locally, nationally and regionally for 'Leicester Cannons & East Midlands' since the age of eleven.

Theatre includes: 'Sarah Brown' in *Guys And Dolls*; 'Charlotte' in *Oliver!*; 'Ann' in *Half A Sixpence*; 'Laurey' in *Oklahoma!*; 'Minnie Fay' in *Hello Dolly*; 'Helene' in *Sweet Charity*; 'Katie Brown' in *Calamity Jane*; 'Belle' in *Disney's Beauty And The Beast*; 'Princess Yasmine' in *Aladdin* and most recently as 'Susan' in *Teenager In Love* with 'The Kirby Muxloe Players'.



Katie Draper – Bridget (the icy leader)

Katie spent six months working as an English teacher in China before returning to Leicester to work as a receptionist in a local doctor's surgery. Before this, Katie studied at 'Leicester College' where she graduated with a diploma in Musical Theatre. Katie lives in Syston with her fiancé George and their dog, "Teddy".

Theatre includes: 'Dorothy' in *The Wizard Of Oz*; 'Eliza Dolittle' in *My Fair Lady*; 'Swallow' in Lloyd Webber's *Whistle Down The Wind*; 'Maid Marion' in *Robin Hood And The Babes In The Wood*; 'Cinderella' in *Cinderella*; *Oliver!*; *The King And I*; *Boogie Nights* and *Our House*.



Laila Curtis – Sharon (the new girl next door)

Laila is a PhD student in Veterinary Medicine and Science and in her spare time is a musical theatre enthusiast. Laila has danced and sung from the age of 7 to 18 as part of the 'Welland School of Dancing' in Stamford and has performed in several small scale productions in Cornwall as a holiday entertainer.

Theatre includes: 'Laurey' in *Oklahoma!* and *Our House*.



David Lovell – Eric "Rubber Legs" De Vene (the aging rocker)

A college lecturer by day, David caught the acting bug at university and has since become a regular performer on stage in Leicester, Buxton and Chesterfield.

Theatre includes: 'Sidney Bruhl' in *Deathtrap*, 'John' in *Calendar Girls*, 'Roger De Bris' in *The Producers*, 'Harold' in *The Full Monty*, 'Henry Higgins' in *My Fair Lady*, 'Bill Snibson' in *Me And My Girl*, 'Fred/Petruccio' in *Kiss Me Kate*, 'Pirelli' in *Sweeney Todd*, 'Jeff Douglas' in *Brigadoon!*, 'Ali Hakim' in *Oklahoma!*, 'Chitterlow' in *Half A Sixpence*, 'Ko-Ko' in *The Mikado*, 'Jack Point' in *Yeomen of the Guard*, 'Major-General' in *Pirates of Penzance*, 'Lord Chancellor' in *Iolanthe*, 'Danilo' in *Merry Widow* and most recently as 'George Dillingham' in *Aspects Of Love* at The Buxton Opera House. For the last 4 years, David has played the Dame in The Little Theatre's annual pantomime and he will be returning this Christmas to play 'Queen Melinda Marmalade of Marmaladia' in *Puss in Boots*.



Wil Neale – Gary (the chauvinistic braggart)

Wil trained at 'Mountview Academy of Theatre Arts' (London) and works as a professional actor. In 2010, Wil reached the final of Channel 5's Glee inspired talent show *Don't Stop Believing* taking lead vocals with the group 'Three Spires'.

Theatre includes: 'Jean Valjean' in *Les Miserables* (Best Performer NODA Awards); 'Galileo' in *We Will Rock You*; 'Link Larkin' in *Hairspray*; 'Joe Casey' in *Our House*; 'Ariel' in *Return To The Forbidden Planet*; 'Nick Piazza' in *Fame*; 'Riff' in *West Side Story* and most recently as 'Jesus' in *Jesus Christ Superstar* at Leicester's 'Curve Theatre'. Wil looks forward to playing 'Daddy Warbucks' in *Annie* at 'The Concordia Theatre', Hinckley this November.



Matthew Bloomfield – Eddie (the pill popping goon)

Matt will shortly be entering the final year of his BTEC in Musical Theatre at 'Brooksby College', Melton. Matt has been interested in the arts from a very young age, starting out in the St. Mary's Church Choir when he was eight. He found his love for musical theatre two years later when he performed in the chorus of *Barnum* with 'The Melton Musical Theatre Company'. Matt performs acoustic music in pubs and cafe's in and around Leicestershire.

Theatre includes: 'Willard' in *Footloose*; 'Gavroche' in *Les Miserables* (School Edition); 'Servant' in *Annie*; British Soldier in *Musical Blitz*; 'Yonkers' in *Bugsy Malone*; 'Callum' in *Our House*; 'Slim' in *Oklahoma!*; *The Pyjama Game*; *Fiddler On The Roof* and most recently in the *The Wiz* at Melton Theatre.



Keiran Whelan – Rick (the geek with no chic)

Keiran works for the 'asra Housing Group' and spent most of his teenage years training with the 'Leicestershire Arts Dance Company'. He fell in love with musical theatre after seeing a production of *Calamity Jane* when he was twelve years old. In 2006, Keiran spent six months touring Majorca in the tribute band 'The Soultown Swingers'.

Theatre includes: 'Arthur Kipps' in *Half A Sixpence*; 'Billy Crocker' in *Anything Goes*; 'Bobby Child' in *Crazy For You*; 'Oscar Lindquist' in *Sweet Charity*; 'The Man' in Lloyd Webber's *Whistle Down The Wind*; 'Curly' in *Oklahoma!* and most recently as 'Wild Bill Hickock' in *Calamity Jane*. For nine years, Keiran has played a variety roles in The Little Theatre's annual pantomime where he will be returning this Christmas to play the title role in *Puss In Boots*.





CLUB A GO-GO



REHEARSAL PICTURES



WARNING!! STROBE LIGHTS WILL BE USED DURING THIS PERFORMANCE AND THEY WILL BE GROOVY!

Timothy Neville – Lighting And Sound Design

Sound Designer for: *God of Carnage*. **Live Sound for:** *Rob Beckett: LIVE!*

Sound Operator for: *Lucky Sods; Outside Edge and God of Carnage*.

Stage Management for: *Man of the Moment; The Glass Menagerie; The Forsythe Saga; Rollin' Back The Years and Cranford*.

Lighting Operator for: *Body Language; Robin Hood and the Babes in the Wood; Travels with My Aunt and Cinderella*.

Stage Technician for: *Cinderella*.

Follow Spot Operator for: *Dick Whittington; The Producers; Annie; Kiss Me Kate and Rent* (Curve Theatre, Leicester).

Audio Visual Design for: *Travels With My Aunt*.

On Stage Sound for: *Robin Hood and the Babes in the Wood*.

The Heather Brothers – Music, Book And Lyrics

The Heather Brothers were born in London, grew up in Zimbabwe, and spent their teenage years touring with their rock band. Their first musical, *Big Sin City*, which after a national tour played a season at London's Roundhouse – as did their second musical *Love Bites*. They then wrote and produced *A Slice Of Saturday Night* breaking all records at the Arts Theatre in London's West End. *A Slice of Saturday Night* has since completed four national tours of Britain, two European tours, and two tours of Japan; along with well over 300 productions world-wide; has been translated into 9 languages. Recently the show played a limited season Off-Broadway under the American title, *Café A Go-Go*. When their next musical, *Lust*, opened at the Theatre Royal Haymarket, the brothers had two shows running simultaneously in London's West End.

Other work includes: *Blood Money and Cold Sweat, Gratuitous Sex and Violence (and Good Old Rock 'n Roll) Teen Scream and The Bobby Dallas End of Tour Celebrity Party*. The brothers have also written, directed, and produced two films: *The Big Finish* and *Seriously Twisted*.

KW PRODUCTIONS WOULD LIKE TO THANK...

Verity Bartsch, Gary Phillipott and everyone at 'Off The Fence Theatre Company'

The theatre, bar staff and front of house team at 'Upstairs At The Western'

Online ticket sales – Ticket Source

Costumes - John Bale and The Leicester Drama Society

Set – Simon Dickens, The Leicester Drama Society and Kirby Muxloe Players

Lighting and Sound Assistance – David Hately

Transportation of Set – Ed White

Rehearsal Space - Estelle Williamson, The Wolsey Staff and The Wolsey Building Residents

Risk Assessment – Simon Dickens

Backstage Team and Construction – Simon Dickens and Timothy Neville

Website Design for KW Productions – Black Owl Website Design

Cast Hair Design – Deana Clarke, Samantha Cook and everyone at DM Hair, Leicester

Programme Design – Alice Johnson

Flyer and Poster Design – Ed Geraghty and Keiran Whelan

KW Productions Logo Design – Ed Geraghty

Rehearsal Photography and Cast Portraits – Timothy Neville

Leaflet Dropping – Julianna Aversano, Deana Clarke and Chris Newby

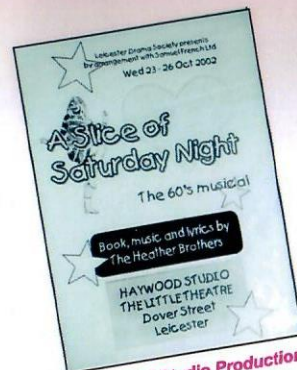
Our Advertisers – Knighton Park Amateur Operatic Society, DM Hair, Black Owl Website Design, PJ Cupcakes,

Wigston Amateur Operatic Society and Matthew Bloomfield

With special thanks to Chris Newby, Abigail Whelan and John Whelan for making this production possible.

Apologies for anyone who may have been missed since this programme has gone to print

THE LONG WAY BACK... ...TO A SLICE OF SATURDAY NIGHT



2002 LDS Studio Production

In 2002, my best friend Lucy was cast as Sue in The Leicester Drama Society's studio production of *A Slice Of Saturday Night*. I must admit, I was reluctant to see the show as I had never heard of it. I remember sitting in the audience and watching this colourful, witty show unravel and remember being captivated by the characters and all of the songs. Needless to say, I bought the CD immediately and listened to it non stop until I knew every word by heart..... (geeky, I know).

Lucy excitedly called me in 2004 and told me that The Leicester Drama Society wanted to bring their production of 'Slice' to their main stage at The Little Theatre. My first question was, "Who is playing Rick...?". Unfortunately for me, all the male roles were reprised by the original cast... I was devastated to say the least. Again, I sat in the audience and watch this incredible show come to life and made a pact with myself that one day I would be in this show.

Last year, I moved very close to 'The Western Pub'. It had always been my local haunt for drinking on a night out, so you can imagine how excited I was to find out they were opening a pub theatre upstairs. With some friends, I attended a production of *Big Daddy vs Giant Haystacks*. I can't tell you what the show was about – all I remember was seeing the stage, and feeling an idea light up in my head – "I have to do 'A Slice Of Saturday Night' in this venue....!". The rest, you could say, is history.

It is with great honour that I bring this show to 'Upstairs At The Western' – a fantastic new venue that I feel very passionate about. I have had the great pleasure of playing opposite or alongside all of the very talented cast members you see tonight and it is very humbling to me that they have all agreed to take part in this production.

I have also managed to 'bag' the best musical director/ director around, my good friend Leigh White, whose tireless efforts and enthusiasm have been an inspiration to everyone involved in this production and without whom this production would not have been possible – "a musical genius".

It is also no coincidence that he was the original musical director for both productions of *A Slice Of Saturday Night* I saw in 2002 and 2004.

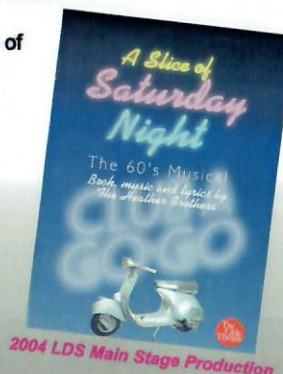
It would take forever to single out everyone who has helped with this production as I have received an enormous amount of support and I am extremely grateful to everyone who has contributed in their way.

Oh, and did I mention... I finally get to live out my long time ambition of playing Rick!

I hope that you sit in the audience tonight and feel as captivated by this incredible show as I did way back in 2002.

I know that it will stay with me for a lifetime.

Keiran Whelan (Producer)



KNIGHTON PARK AMATEUR OPERATIC SOCIETY PRESENT



OH WHAT A LOVELY WAR

18TH - 22ND NOVEMBER 2014 AT THE LITTLE THEATRE, LEICESTER

TICKETS £14

Available from the Ticket Manager on 01509 414177 or visit www.kpaos.co.uk

JOAN LITTLEWOOD'S Musical Entertainment BY ARRANGEMENT WITH SAMUEL FRENCH LIMITED OH WHAT A LOVELY WAR By Theatre Workshop, Charles Chilton, Gerry Raffles and Members of the Original Cast

Title suggested by Ted Allan

Tickets also available from The Little Theatre 0116 2551302 or online at www.thelittletheatre.net

WAOS PRESENTS
FORTIES TO THE NOUGHTIES
SINGING CONCERT

CONTACT BOX OFFICE 01532 718935

FEATURING:

- HERO
- TEARS IN HEAVEN
- CHASING CARS
- JUST THE WAY YOU ARE
- BOHEMIAN RHAPSODY
- THE BEATLES MEDLEY
- AND MANY MORE

GUTHLAXTON COLLEGE
STATION ROAD
WIGSTON
LEICESTER
LE18 2DS

WEDNESDAY 19.11.14
FRIDAY 21.11.14
SATURDAY 22.11.14

TICKETS ONLY £9.00

Matt's
ACOUSTIC SESSIONS
07535 247 096

PJ Cupcakes



www.pjcupcakes.co.uk
enquiries@pjcupcakes.co.uk

ED GERAGHTY
GRAPHIC DESIGNER

WANT SOME DESIGN?

LOGO'S

BUSINESS CARDS

POSTERS / FLYERS

BROCHURES / BOOKS

WEBSITE GRAPHICS

CV'S

IF YOU WANT SOMETHING DESIGNED FEEL FREE TO GET IN TOUCH AND IM SURE I WILL BE ABLE TO HELP YOU OUT.

[www EDGD.CO.UK](http://www.edgd.co.uk)
EDGERAGHTY@LIVE.COM

'BLACK OWL COULDN'T HAVE PROVIDED ME WITH A MORE IMPRESSIVE SERVICE. THEY TOOK EVERYTHING I ASKED FOR AND MADE IT REAL'

BLACK OWL

WEBSITE DESIGN & HOSTING

WWW.BLACK-OWL.CO.UK
HELLO@BLACK-OWL.CO.UK

Official Hair Designers For The Slice Girls



01162516476

176 Fosse Road North | Leicester | LE3 5ES

Find us on
facebook / Dmhairleicester
for exclusive offers and discounts

**50%
OFF**

YOUR FIRST
VISIT TO US

T&C Apply

**30%
OFF**

YOUR SECOND
VISIT TO US

T&C Apply

**20%
OFF**

YOUR THIRD
VISIT TO US

T&C Apply

£15.00

SHELLAC
T&C Apply