



KW Productions proudly presents
an LDS Fundraising Production



INTO THE WOODS

Tuesday 26 – Saturday 30 June 2018

INTO THE WOODS

Music and Lyrics by Stephen Sondheim
Book by James Lapine

Originally Directed on Broadway by James Lapine
Orchestrations by Jonathon Tunick

This amateur production is presented by arrangement with Music Theatre International (Europe)
All authorised performance materials are also supplied by MTI Europe www.mtishows.co.uk

Original Broadway Production by
Heidi Landesman, Rocco Landesman, Rick Steiner
M. Anthony Fisher, Frederic H. Mayerson, Jujamcyn Theaters
Originally produced by the Old Globe Theaten, San Diego, CA

The Little Theatre, Dover Street, Leicester
www.thelittletheatre.net



LITTLE SHOP OF HORRORS

Book & Lyrics by
HOWARD ASHMAN

Music by
ALAN MENKEN

Based on the film by Roger Corman, Screenplay by Charles Griffith
Originally produced by the WPA Theatre (Kyle Renick, Producing Director)
Originally produced at the Orpheum Theatre, New York City by the WPA
Theatre, David Geffen, Cameron Mackintosh and the Shubert Organization

This amateur production is presented by arrangement with
Music Theatre International (Europe)

All authorised performance materials are also supplied by MTI Europe
www.mtishows.co.uk

The Little Theatre
Dover Street, Leicester.
October 8th - 13th 2018

Tickets £13 & £15

0116 2551302 (10:00am - 7:30pm)

www.theidols.co.uk
www.thelittletheatre.net

Like us on Facebook & follow us on Twitter @the_idols



ONCE UPON A TIME.... IN A FAR OFF KINGDOM...

I fell in love with Into the Woods before I had even listened to a note of the score. As a teenager I would go to the Central Lending Library on Belvoir Street and spend hours looking through the musicals and film albums. I was fascinated by the album cover artwork and production images. I knew every single musical and film LP kept in that rack. Occasionally new albums got added and there it was, the 1988 Broadway cast recording of Into the Woods. I stared for ages at the cover. The design was a clever twisted assortment of trees that made the Into the Woods logo. The double fronted album sleeve contained amazing glossy production shots. Without doubt, I was hooked. I couldn't wait to listen to this.

I listened to that cast recording over and over again. My obsession with Into the Woods had begun...

In 1994 and in my final term at Central School of Speech and Drama, I was DSM on Into the Woods staged by the graduating year. Just 4 weeks before we opened I tragically lost my Mum to Cancer. Devastated I threw myself back into college life because the 'show must go on' after all. Losing a parent and working on a show about parents and children was really tough. I would sob every night when the Baker's Wife sings the

lines "sometimes people leave you, half way through the wood" James Lapine's lyrics are incredibly emotive. Even to this day, my heart skips a beat and I think of my Mum every time I hear that line. She would have loved this show.

Skip several years and I find myself enjoying a glass of wine with my good friend Keiran Whelan and we were both looking at possible show titles to work on together. I've said many times to Keiran how much I would like to direct and/or MD Into the Woods (a show Keiran adores as much as me). We'd both seen the incredible Fiasco Theater Company version of Into the Woods which cleverly reimagined the staging and it had been truly inspiring. "Let's do it" he said, and almost a year later, here we are.

Reworking and staging this production for a cast of 10 actors and just accompanied by a piano has been an enormous challenge. I am ever thankful to our brilliant cast and production team. Thank you for coming to support this production.

Oh, and the moral of the story is...Careful the things you say, Keiran will listen!

LW

LEIGH WHITE - Director/ Musical Director


In the last production of Into The Woods Leigh worked on in 1994, Cinderella's Prince was played by John Owen Jones who went on to be the youngest every 'Jean Valjean' in Les Miserables and the longest running 'Phantom' in The Phantom of the Opera.....it was agony! Leigh's favourite fairy story is Cinderella as he says it has to be one of the most magic transformation scenes when performed on stage - "Beautiful!"

As director/ MD, Leigh's favourite shows include: Company; A Slice of Saturday Night and Bang, You're Dead.

"I wish.....for more sleep!"



KW Productions proudly presents
an LDS Fundraising Production



INTO THE WOODS

Music and Lyrics by Stephen Sondheim
Book by James Lapine

Originally Directed on Broadway by James Lapine
Orchestrations by Jonathon Tunick

The amateur production
is presented by arrangement with Music Theatre International (Europe)
All authorised performance materials are also supplied by MTI Europe www.mtishows.co.uk



CAST

Baker – Lee Samuels

Baker's Wife – Danielle Smith

Witch – Karen Gordon

Narrator/Mysterious Man – Tony Whitmore

Little Red Riding Hood/Rapunzel – Katie Proctor

Jack/Steward – Tim Stokes

Cinderella/Granny – Laura Carvell

Cinderella's Prince/Florinda/Wolf – Keiran Whelan

Rapunzel's Prince/ Milky White/ Lucinda/ Wolf – Keir Watson

Jack's Mother/ Cinderella's Mother and Stepmother – Liz Kavanagh

The Voice of the Giant – Sarah Varnam and Emily Hall (Matinee)

Production Team

Director/ Musical Director – Leigh White

Assistant Director – Sarah Varnam

Choreographers – Danielle Smith and Keiran Whelan



MUSICAL NUMBERS




Act One

Into The Woods: Prologue
Cinderella at the Grave
Hello, Little Girl
I Guess This is Goodbye
Maybe They're Magic
Our Little World
I Know Things Now
A Very Nice Prince
First Midnight
Giants in the Sky
Agony
A Very Nice Prince (Reprise)
It Takes Two
Stay With Me
On The Steps of the Palace
Ever After

Company
Cinderella and Cinderella's Mother
Little Red Riding Hood and the Wolves
Jack
Baker's Wife
Witch and Rapunzel
Little Red Riding Hood
Cinderella and Baker's Wife
Company
Jack
The Princes
Cinderella and Baker's Wife
Baker and Baker's Wife
Witch
Cinderella
Company

Please note: There will be a 20 minute interval between each act



Act Two

So Happy
Agony (Reprise)
Lament
Any Moment
Moments in the Woods
Your Fault

Last Midnight
No More
No One is Alone

Finale: Children Will Listen

Company
The Princes
Witch
Cinderella's Prince and Baker's Wife
Baker's Wife
Jack, Baker, Cinderella and Little Red
Riding Hood
Witch
Baker and Mysterious Man
Cinderella, Baker, Jack and Little Red
Riding Hood
Company

DANIELLE SMITH – Baker's Wife

Danielle's party trick is walking on her hands! Her favourite fairy story is Peter Pan as she loves the idea of fairy dust that makes you fly and Neverland where no one grows up.

Danielle's favourite roles include: 'Laurey' in Oklahoma!; 'Martha' in Spring Awakening; 'Miranda' in The Tempest and 'Polly' in Crazy for You.

"I wish.....to be able to travel to the moon or another planet one day"



KAREN GORDON – Witch



As a child, Karen was so self conscious and shy that she turned down the first acting role offered to her – the Angel in her school nativity. Although she is still a timid creature, she has found the one place she can really be free and fearless is on stage.

Karen's favourite fairy story is The Sleeping Beauty. As a child she was entranced by the Disney version which borrowed from the Tchaikovsky score. As an adult, the story has

also inspired fabulous dance productions. Karen's favourite roles include: 'Miranda' in Relative Values; 'Maggie' in Hobson's Choice; 'Nora' in A Doll's House and 'Lady Chiltern' in An Ideal Husband.

"I wish.....to see the maiden flight of the new Airlander hybrid air vehicle that my partner Andy is working on....she'll be the biggest powered aircraft on the planet"

KATIE PROCTOR – Little Red Riding Hood/ Rapunzel

Katie used to live in China where she taught English in schools. Her favourite fairy story as a child was Snow White as she loved all the animals and the dwarfs with all their different personalities.

Katie's favourite roles include: 'Eliza Dolittle' in My Fair Lady; 'Swallow' in

Whistle Down The Wind; 'Bridget' in A Slice of Saturday Night and Little Red Riding Hood in this production of Into The Woods!

"I wish..... a long and happy life for all my family and friends"



AURA CARVELL – Cinderella/ Granny

Laura is proud to have been in every KW Production since the beginning! Her favourite fairy story is Beauty and the Beast as it teaches you to have belief and faith in others, never to give up on anyone and that beauty is in the eye of the beholder.

Laura's favourite roles include: 'Laurey' in Oklahoma!; 'Florence' in Chess; 'Sue' in A Slice of Saturday Night and 'Belle' in Disney's Beauty and the Beast.

"I wish.....for a year off to travel the world in style!"

LIZ KAVANAGH – Jack's Mother/ Cinderella's Stepmother and Mother

Liz once shared a ballet barre with Victoria Beckham! When she was a little girl, Liz's favourite fairy story was The Princess and the Frog because of the beautiful Ladybird book illustrations. Now she is older, Liz finds a truth in the story that resonates with her – before she met her handsome prince, she kissed a lot of frogs!

Liz's favourite roles include: 'Peggy Sawyer' in 42 Street; 'Babette' in Disney's Beauty and the Beast; 'April' in Company and 'Dolly' in One Man, Two Guvnors.

"I wish.....health and happiness for all my family and friends"



LEE SAMUELS - Baker

Lee has a phobia of large stained glass windows, which once led to a nightmarish experience in the Disney Castle at Disneyland Paris. His favourite fairy story is Aladdin as the idea of a guy consciously deciding to give his third wish away for someone else's freedom is heart-warming.

Lee is primarily a director, his recent highlights include Lift at The Haymarket Theatre, Parade at Curve Theatre and Our House with Leicester Theatre Group. He has also enjoyed playing 'Old Man Strong' in Urinetown.

"I wish..... for more wishes....duh"



TONY WHITMORE - Narrator/Mysterious Man

Tony is the only member of his parental family that has ever been involved with music or the theatre... no family tradition there then. His favourite fairy story is Cinderella because, at heart, he is just an old romantic!

Tony's favourite roles include: 'Fagin' in Oliver!; 'Judge Turpin' in Sweeney

Todd; 'Mack' in Mack and Mabel and 'The King' in The King and I.

"I wish.....to go on an all expenses paid luxury trip to watch the British and Irish lions play in New Zealand. Rugby, along with music, the theatre and cycling is my real passion"

TIM STOKES - Jack/Steward

Tim can lip-catch 20 beer coasters! His favourite fairy story is Rumpelstiltskin as he just thinks the name is hilarious!

Tim's favourite roles include: 'Frankie Epps' in Parade; 'Don' in Summer Holiday; 'Perchik' in Fiddler on the Roof

and last Christmas as the title role in Dick Whittington.

"I wish.....that everyone in the world was musically gifted so that everyone could jam with anyone"



KEIRAN WHELAN - Cinderella's Prince/Florinda/Wolf

Keiran once performed with Rylan (before he was famous) in a Westlife Tribute band that toured Majorca! Keiran's favourite fairy story is The Little Match Girl as it is full of truth and pathos and shows children that not every story needs to end with a 'happily ever after'. Into The Woods marks the third time Keiran has played Cinderella's Prince in some format on stage.

Keiran's favourite roles include: 'The Man' in Whistle Down The Wind; 'Bobby Child' in Crazy for You; 'Rick' in A Slice of Saturday Night and earlier this month as the title role in Jekyll and Hyde: The Musical.

"I wish.....I could play the piano!"



KEIR WATSON - Rapunzel's Prince/Milky White/Lucinda/Wolf

Keir is a trained professional wrestler and spends his weekends coaching at From The Ground Up School of Wrestling. His favourite fairy story is The Boy Who Cried Wolf because every fairy story needs a wolf or two!

Keir's favourite roles include: 'Beatty' in Fahrenheit 451; 'Insignificant Other' in

The Irrelevant Occurrences of an Insignificant Other and 'Stanley Stubbers' in One Man, Two Guvnors.

"I wish.....I was a little wasp, or a cherry in a big, round apple pie, or a harvest moon, or a simple tune, or a pyramid"





Photographs by Sarah Varnam and SW Photography



SARAH VARNAM – Assistant Director/Voice of the Giant

Sarah is the Head of Curriculum at PQA Studios, London. Sarah's favourite fairy story is The Sleeping Beauty as she would love to have a 100 year nap!

Sarah's favourite roles include: 'Helena' in

A Midsummer Night's Dream; 'Miss Hannigan' in Annie; 'Jenny' in Company and 'Amanda' in Private Lives.

"I wish.....to have more time to realise everything I still want to do and learn"

EMILY HALL -Voice of the Giant (Matinee)

Emily is the middle child of five girls! Her favourite fairy story is The Sleeping Beauty because she is beautiful and she gets to sleep a lot.

Emily's favourite roles include: 'Susan' in Company; 'Estella' in Great Expectations and 'Tzeitel' in Fiddler on the Roof.

I wish..... for calorie free chocolate!



“The Little Theatre”

Theatre Manager and Premises Supervisor: Philip Royley

The Little Theatre is owned and operated by Leicester Drama Society Ltd., an amateur non-profit making organisation founded in 1922 for the furtherance and study of the art of drama. LDS survives without public subsidy and presents a repertoire of plays of all types throughout the year.

Access: Disabled patrons are very welcome. There is a lift to the auditorium and wheelchair spaces are available. For patrons with impaired hearing an infrared amplification system is now provided. Headsets may be borrowed from Front of House staff in the Foyer.

Safety: The safety precautions in this theatre fully satisfy official requirements. In the unlikely event of an emergency, however, we recommend patrons note the nearest emergency exits. Patrons are advised that official regulations prohibit members of the audience from standing in the aisles during a performance.



INTO THE WOODS: THE FAIRYTALE FOR ADULTS?

A little girl and her grandmother are swallowed whole by a wolf, whose stomach is then slit open to retrieve them. A young woman's cruel stepsisters chop off chunks of their feet to fit into her gold slippers. A boy gets taken in by a woman offering him shelter, then robs them blind and kills her husband. These are stories intended for children.



To call fairy tales dark would be an understatement. And yet, these are the stories we're raised with —often in sanitized, Disney adaptations. As violent and sometimes traumatic as these fairy tales are, they still offer the traditional “happily ever after”. Especially in their modern, child-friendly versions — which cut out many of the more unseemly, nightmare-inducing elements of the traditional folk tales — fables that were once dark morality tales to scare children have become appropriate fare for toddlers.

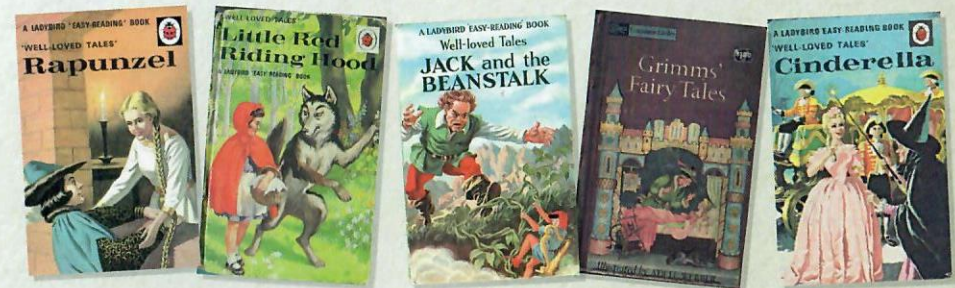
Part of the brilliance of the musical Into the Woods, is that the book by James Lapine and music and lyrics by Stephen Sondheim combine the versions of fairy tales we've come to know and love with the dark undertones that have been scrubbed clean over the past couple of centuries. Sondheim and Lapine were inspired by psychologist Bruno Bettelheim's 1976 book The Uses of Enchantment: The Meaning and Importance of Fairy Tales – the concept to turn bedtime stories into the stuff that keeps grown-ups awake all night. When the musical opened on Broadway, in 1987, parents would occasionally yank their young children out of the theatre in shock during the second act, shouting; “I can't believe they killed Rapunzel?!”

The real power of Into the Woods lies in Act Two when suddenly the “noble” acts of our childhood heroes and heroines are questioned. The show forces us to confront the long-held beliefs about the fairy tales we grew up with and in which we placed value. “Right” and “wrong” are relative concepts, as are “good” and “evil”.

Knowing that there is no actual right course of action for everything is, frankly, terrifying, and a concept that most children are ill-equipped to handle. Thankfully, fairy tales — at least, the 20th-century versions — offer a more black-and-white world of good and evil. Children rarely question the motivations of their heroes, because fairy tales don't ask them to. Into the Woods explores the complexity of morality, which is something its source material was less willing to do. The result is especially effective for adults who grew up reading these tales without the sort of thoughtful analysis that Sondheim and Lapine's work requires.

I am personally very proud to present this clever, witty and moving show. The best children's entertainment can also be enjoyed by adults, but the reverse isn't always true – this is not the case for Into The Woods. I believe the success of the show comes from that fact that, regardless of age, every audience member feels nostalgia for the show's characters. The show remains universal and timeless in its bittersweet revelation that perfectly encapsulates a “loss of innocence” and a stark reality of the world we live.

Keiran Whelan – Producer



LDS Centenary Challenge

Sir Peter Soulsby, Leicester City Mayor, has given Leicester Drama Society a *once in a lifetime* opportunity to extend our Theatre onto the site of the Anchor Centre next door. This will let us move all of our rehearsals, costume hire and other activities into a single building in Dover Street, Leicester.



The new building will include:
A 100 seat Studio Theatre
New Rehearsal Rooms
New Wardrobe and Costume Hire,
New Disabled Access facilities and
Many other improved facilities.

The opportunity is conditional on us obtaining planning permission and raising the funding to build the new building.

We need YOUR Help to make this happen!
Please make a donation now – every £ is important to us.

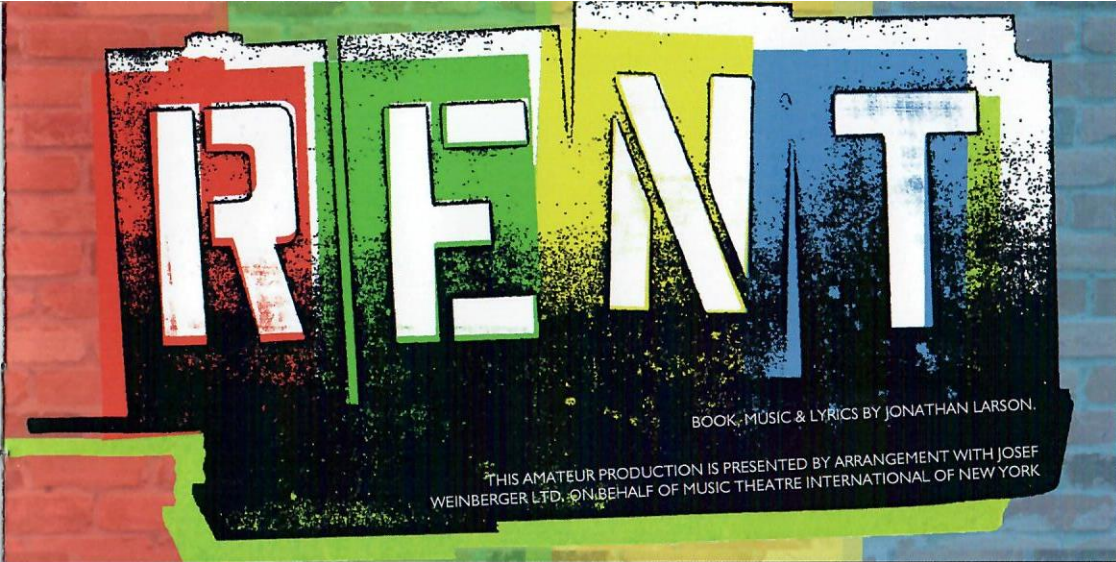
★ Donations can be made *at Our Theatre Box Office,* ★
OR online at:

<https://www.thelittletheatre.net/centenary-challenge-announced/>

There are lots of ways to donate, including “one off” contributions or “monthly” until our centenary. More details are available online at the above link.

Every donation (whatever size) is important. If you can afford to make a donation of £100 or more, we will engrave your chosen message on a new Star on our Centenary Wall.

Your support is vital.
Please show that you care about the
future of our wonderful Little Theatre.



18-22 SEPTEMBER 2018 | 7.30PM
CONCORDIA THEATRE | HINCKLEY
BOOK AT CONCORDIATHEATRE.CO.UK
OR CALL 01455 615 005



**Concordia
Theatre**



ED GERAGHTY
GRAPHIC DESIGNER
& ILLUSTRATOR



Have a design project in mind? Let's Talk.



+447519474043

Feel free to get in touch and we can have a chat about any ideas you have. I look forward to hearing from you.



EDGERAGHTY@LIVE.COM



WWW.EDGD.CO.UK

ACKNOWLEDGMENTS FOR THIS PRODUCTION

Producer	Keiran Whelan
Technical Manager/ Sound Design	Timothy Neville
Stage Manager	Simon Dickens
Deputy Stage Managers	Nikki Strickland and Reema Crooks
Properties	Ron Vials and Sue Vials
Backstage Crew	Andy Mear, Simon Entwistle, Anna Field
Lighting	Andy Crooks and Alex Crooks
Sound Assistant	Stew Wale
Rehearsal Space	Karl Strickland and Leicester Theatre Group
Risk Assessment Officer	Simon Dickens
Box Office	The Little Theatre
Costumes	Leicester Drama Society Wardrobe Hire
Crochet Wigs/ Stepsister's Dress	Dawn Walker
Flyer/ Poster and Programme Design	Ed Geraghty Graphic Design
Programme Printing	Crestline
Leaflet and Poster Printing	CPO, Leicester
Prop and Set Hire Materials	Event Prop Hire
Step Ladders/ Piano Cover Build	Ed White
Onstage Light Bulb Design	Timothy Neville
Cast Portrait Photographs	Sarah Varnam and Matt Reynolds
Rehearsal Photographs	Sarah Varnam and SW Photography
Production Photographs	Pamela Raith
Promotional Video	Timothy Neville and Dave Morris
KW Productions Website	Black Owl

KW Productions is a proud member of NODA,
The National Operatic and Dramatic Association.

PREVIOUS PRODUCTIONS

2014
A Slice of Saturday Night
(Upstairs at the Western)



2015
A Slice of Saturday Night
(Little Theatre, Main Stage)



2015
Company
(Little Theatre Studio)



Photographs by Sally Evans and Tim Neville

KNIGHTON PARK AMATEUR OPERATIC SOCIETY PRESENTS



Tuesday 20th to Saturday
24th November 2018
The Little Theatre,
Dover Street, Leicester
Tickets £15

For tickets please contact:
The Ticket Manager, 2 Bradgate Close, Mountsorrel,
Loughborough, LE12 7DZ.
Or contact 01509 414177
Tickets also available from The Little Theatre 0116 2551302
or online at www.thelittletheatre.net

Monty Python's SPAMALOT
Book and lyrics by Eric Idle Music by John Du Prez & Eric Idle
A new musical lovingly ripped off from the film
"Monty Python and the Holy Grail" From the original screenplay by
Graham Chapman, John Cleese, Terry Gilliam, Eric Idle,
Terry Jones, Michael Palin Original Broadway Production Produced
by Boyett Ostar Productions, The Shubert Organization,
Arielle Tepper Madover, Stephanie McClelland/Lawrence Horowitz,
Elan V McAllister/Allan S. Gordon, Independent Producers Network,
Roy Furman, GRS Associates, Jam Theatricals,
TAG Entertainment, and Clear Channel Entertainment.

crestline
future in <print>

we are ideas people
and problem solvers
in **Design, Marketing
& Print...**



**work with us once and
appreciate the difference**

tel: 01530 838761 fax: 01530 812582
email: enquiries@crestline.co.uk

www.crestline.co.uk

follow us @crestlineprint /crestlineprint

LEICESTER THEATRE GROUP PRESENTS...

CATS

AN AMATEUR PRODUCTION BY ARRANGEMENT WITH THE MUSICAL COMPANY LTD.

MUSIC BY ANDREW LLOYD WEBBER BASED ON OLD
POSSUM'S BOOK OF PRACTICAL CATS BY T.S. ELIOT

ORCHESTRATIONS BY DAVID CULLEN & ANDREW LLOYD WEBBER ORIGINAL PRODUCTION BY
CAMERON MACKINTOSH LTD. AND THE REALLY USEFUL GROUP LTD.

18TH - 22ND
SEPTEMBER

LITTLE
THEATRE

TICKETS
FULL PRICE - £15
CONCESSION - £10

TO BOOK PLEASE VISIT WWW.THELITTLETHEATRE.NET